

Molex Connector Lights

Xprovider Technology

Model: LM-3000

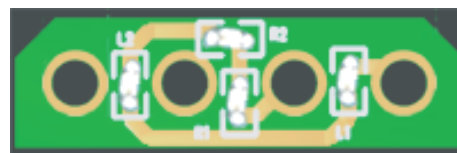
Feature:

- Slim PCB meet Molex Male Connector.
- SMD Technology.
- Two LED build in on unit.
- Varies Kind of LED Color.
- Varies kind of lighting effect on request.
- Competiable Standard Molex 4 Pins Connector.
- Easy for installation.



Specification:

- Power Source : 12VDC.
- Power Input Connector : None(Just fit in)
- Current : 30mA.
- Body Material : PCB FR-4 Double Side.
- LED Type : SMD Devices.
- LED Color : On Request.
- PCB Size : 21(L)mm x 6(W)mm x 1(t)mm.
- Total Thickness : Less Than 2mm.



Ordering Information:

Extension Code : 00 : Standard

01 ~ 99 : Reserved for Option

LM-3 0 0 0 XX

LED Type : R : Red
B : Blue
G : Green
O : Orange
P : Red/Blue
Y : Red/Green
M : R/G/B

Package: 3 : 3pcs
3 : 5pcs

LED Switching Type : 0 : Always on
1 : Switching Color

LM-3 : Molex Lighting Modules